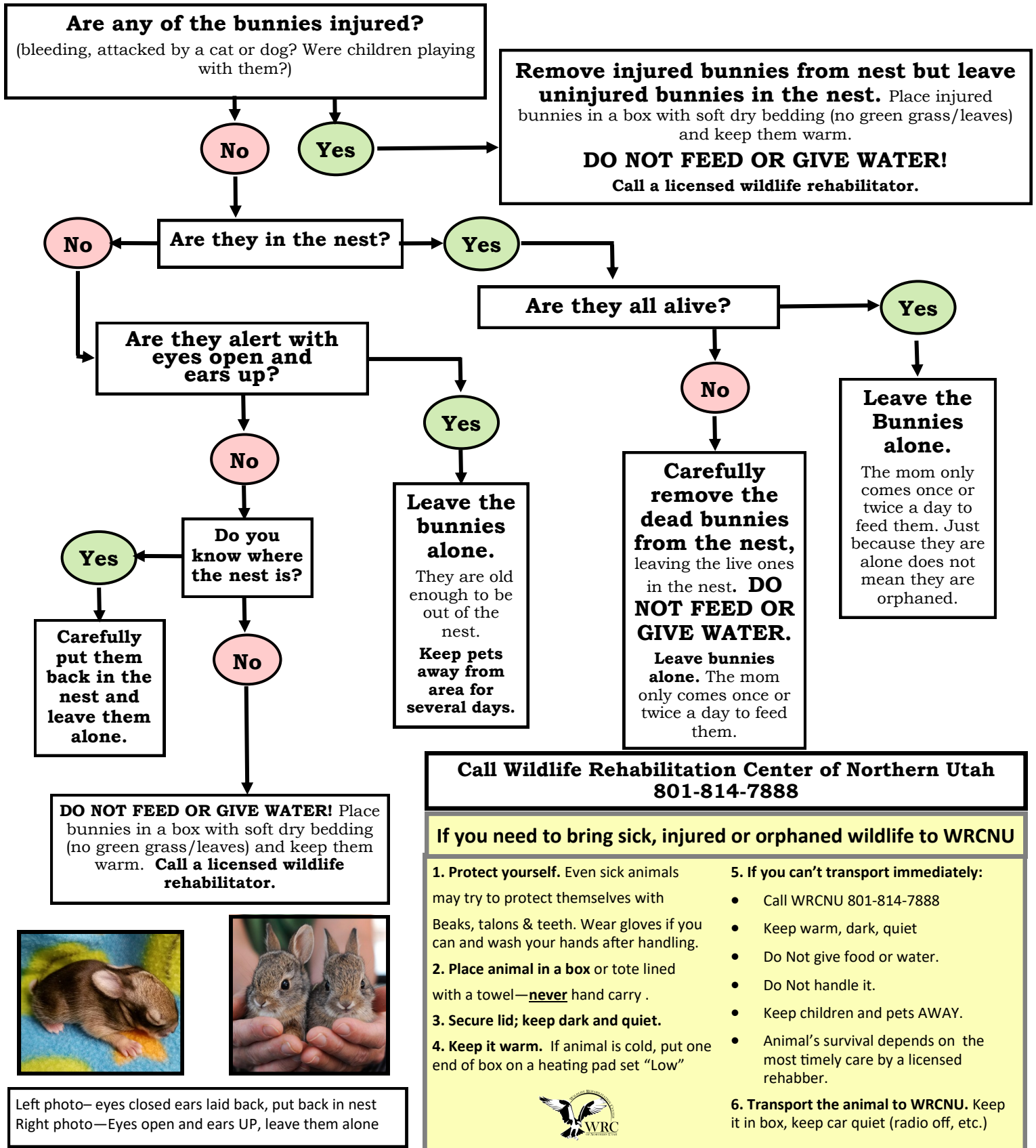




I Found a Nest of Baby Bunnies, **NOW WHAT?!**



Increasingly, wild rabbits and hares are living near our homes and work places. Sometimes they need help and sometimes they do not, but how can you tell? This chart should help, but if you are ever in doubt, please call us first, since the baby's best chance of survival is normally with its mother—This is important, because the stress of being handled can **KILL** a wild bunny or rabbit.



Left photo—eyes closed ears laid back, put back in nest
Right photo—Eyes open and ears UP, leave them alone

