

DEBRIS-FLOW HAZARD SPECIAL STUDY ZONE MAP - OGDEN QUADRANGLE



U.S. DEPARTMENT OF THE INTERIOR
U.S. GEOLOGICAL SURVEY

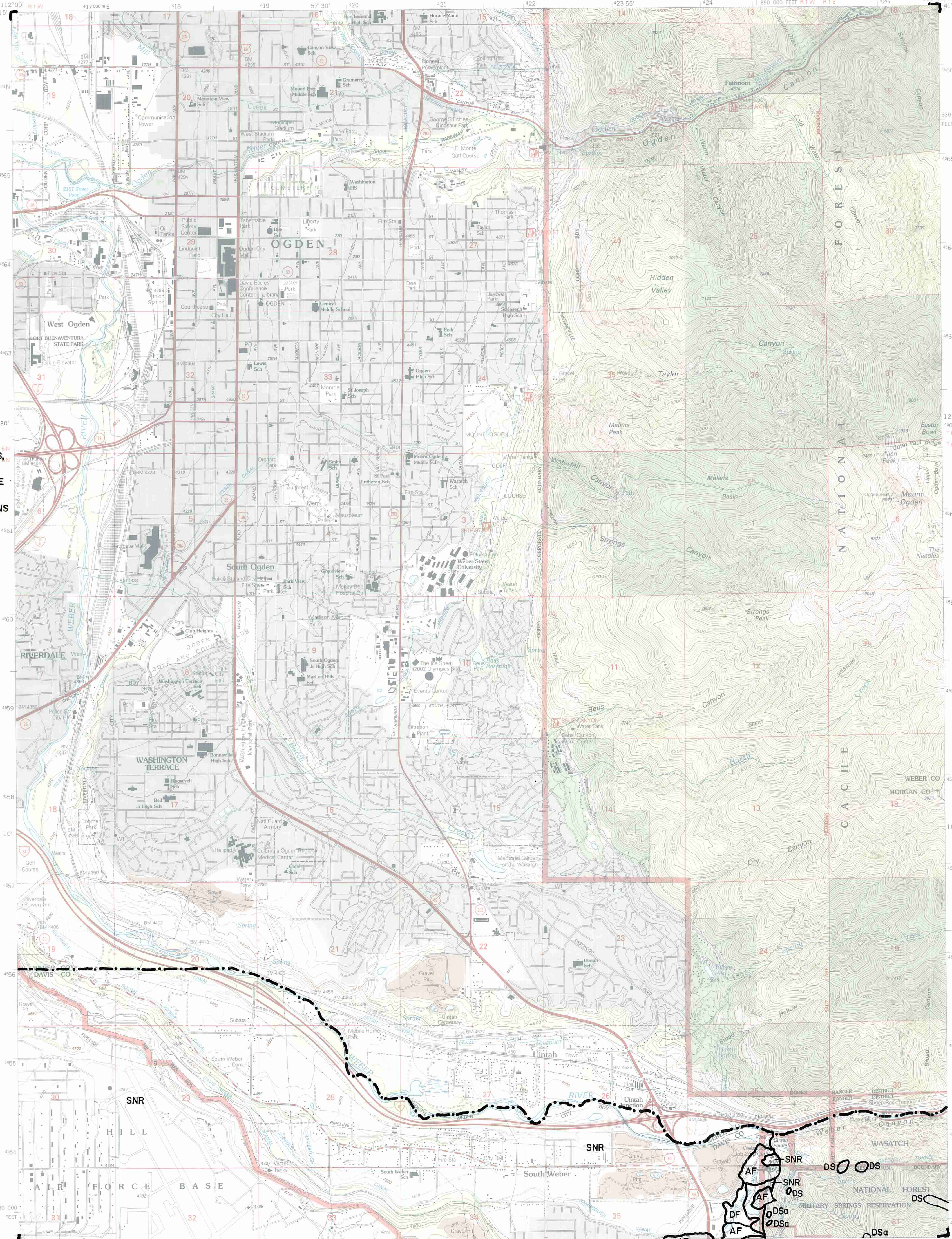


U.S. DEPARTMENT OF AGRICULTURE
FOREST SERVICE

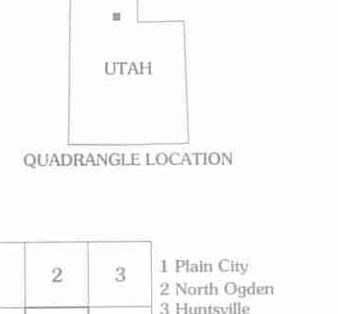
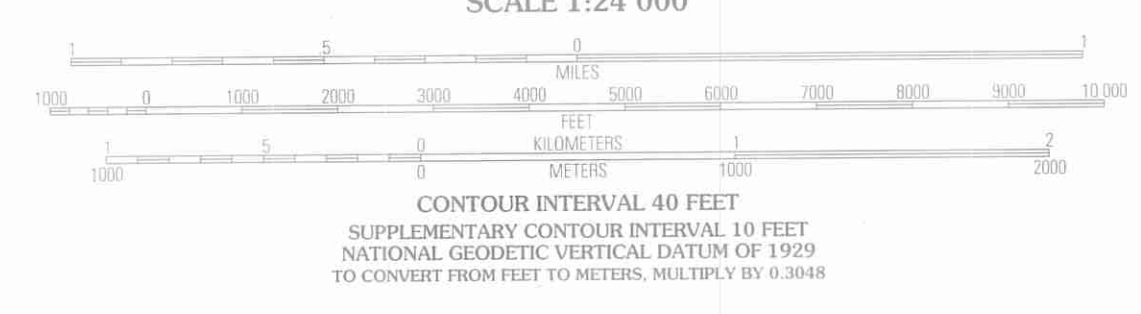
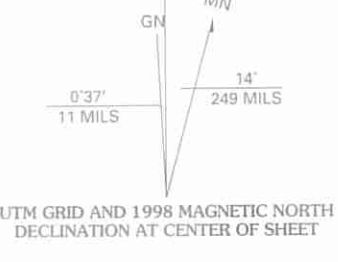
OGDEN QUADRANGLE
UTAH
7.5-MINUTE SERIES (TOPOGRAPHIC)

- EXPLANATION**
- COUNTY LINE
 - DEBRIS-FLOW HAZARD SPECIAL STUDY ZONE BOUNDARY
 - BOUNDARY OF DEBRIS SLIDES, DEBRIS FLOWS, AND YOUNGER HOLOCENE (ACTIVE) ALLUVIAL FANS
 - SNR=area where debris-flow special studies are not required.
 - AF=younger Holocene (active) alluvial fans.
 - DF=debris flow
 - DS=debris slide
 - a = active (historic) slope failure.

Alluvial-fan boundaries compiled from preliminary drafts of surficial geologic mapping by A. R. Nelson and S. F. Personius, U.S. Geological Survey, by Mike Lowe, Davis County Geologist, 1989. Sources of slope-failure mapping are identified on Slope-Failure Inventory Map - Ogden Quadrangle.



Produced by the United States Geological Survey 1992
Revision by USDA Forest Service 1998
Topography compiled 1954. Planimetry derived from imagery taken 1997 and other sources. Public Land Survey System and survey control current as of 1998.
North American Datum of 1953 (NAD 27). Projection and 10 000-foot ticks: Utah coordinate system, north zone (Lambert conformal conic).
Blue 1000-meter Universal Transverse Mercator ticks, zone 12.
North American Datum of 1983 (NAD 83) is shown by dashed corner ticks. The values of the shift between NAD 27 and NAD 83 for 7.5-minute intersections are obtainable from National Geographic Survey NADCON software.
Non-National Forest System lands within the National Forest. Inholdings may exist in other National or State reservations.
This map is not a legal land line or ownership document. Public lands are subject to change and leasing, and may have access restrictions; check with local offices. Obtain permission before entering private lands.
Landmark buildings verified 2000



Symbol	Description
[Red line with 'I']	Interstate
[Red line with 'U.S.']	U.S. Highway
[Red line with 'State']	State Highway
[Red line with 'County']	County Highway
[Red line with 'National Forest']	National Forest, suitable for passenger cars
[Red line with 'National Forest']	National Forest, suitable for high clearance vehicles
[Red line with 'National Forest Trail']	National Forest Trail
[Red line]	Primary highway
[Red line]	Secondary highway
[Red line]	Light-duty road
[Red line]	Composition: Unspecified
[Red line]	Paved
[Red line]	Gravel
[Red line]	Dirt
[Red line]	Unimproved; 4 wheel drive
[Red line]	Trail
[Red line]	Gate; Barrier

THIS MAP COMPLIES WITH NATIONAL MAP ACCURACY STANDARDS FOR SALE BY U.S. GEOLOGICAL SURVEY, P.O. BOX 25286, DENVER, COLORADO 80225. A FOLDER DESCRIBING TOPOGRAPHIC MAPS AND SYMBOLS IS AVAILABLE ON REQUEST.



ISBN 0-407-97247-5
9 780607 972474