

LANDSLIDE HAZARD MAP - OGDEN QUADRANGLE



U.S. DEPARTMENT OF THE INTERIOR
U.S. GEOLOGICAL SURVEY



U.S. DEPARTMENT OF AGRICULTURE
FOREST SERVICE

OGDEN QUADRANGLE
UTAH
7.5-MINUTE SERIES (TOPOGRAPHIC)

EXPLANATION

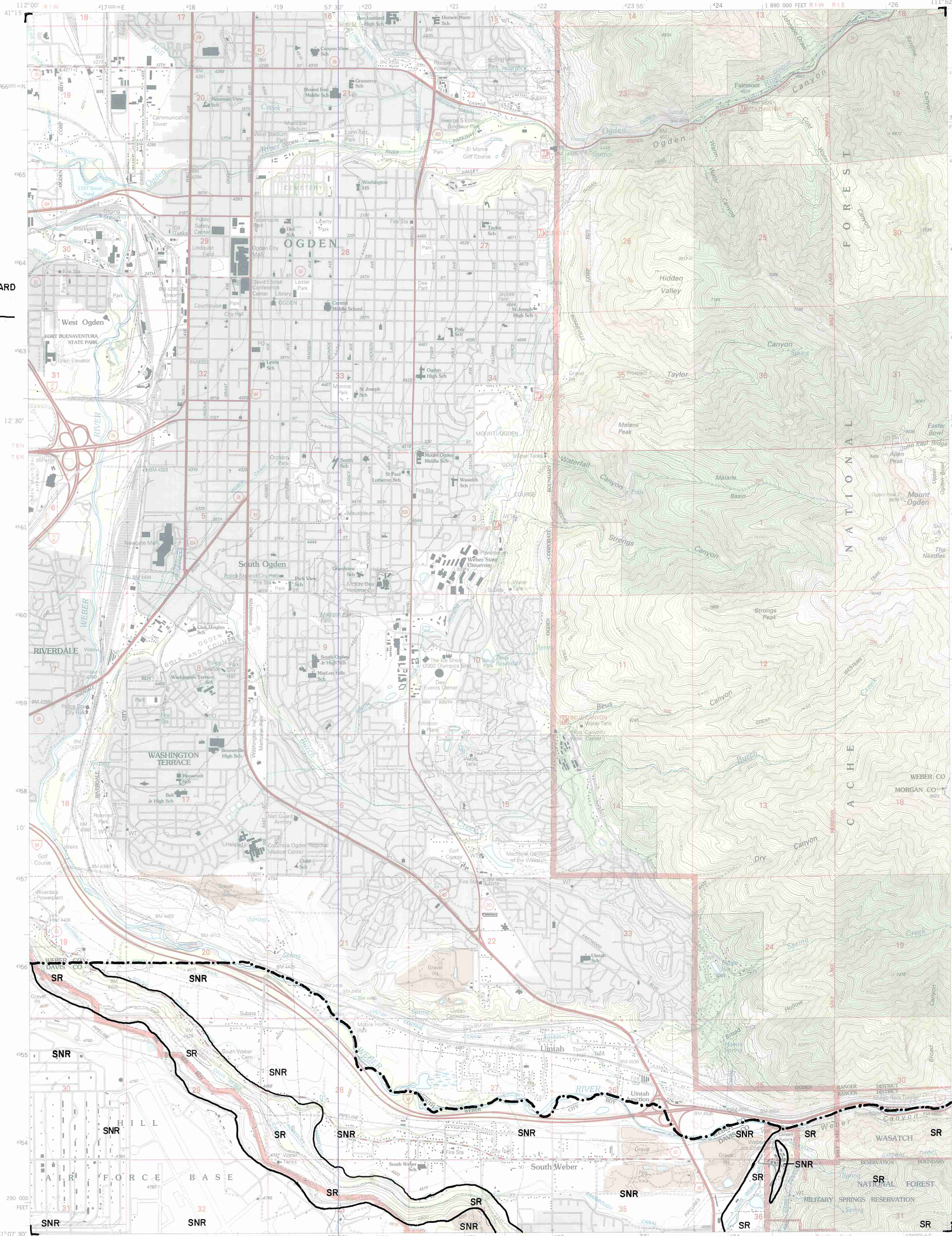
COUNTY LINE

**LANDSLIDE HAZARD
BOUNDARY**

**SNR=area where
landslide-hazard
special studies are
not required.**

**SR= area where
landslide-hazard
special studies
are recommended.**

**Landslide-hazard
boundary compiled
from slope and
existing landslides
by Mike Lowe,
Davis County
Geologist, 1989.
For locations of
historic and
prehistoric landslides,
see Slope-Failure
Inventory Map -
Ogden Quadrangle.**



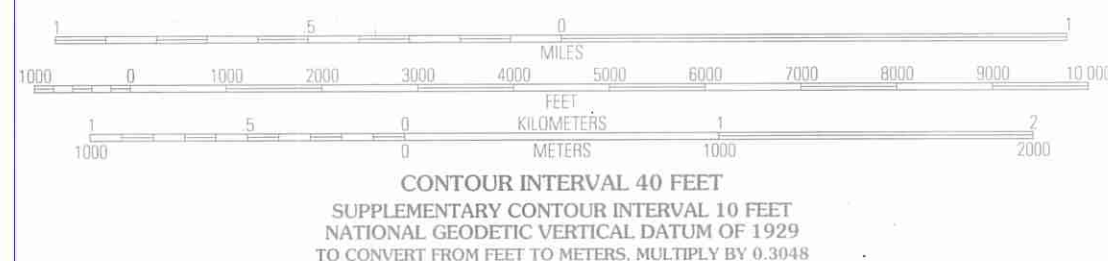
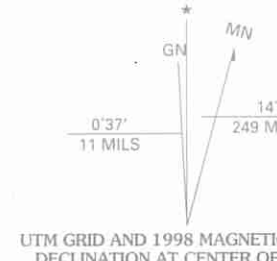
Produced by the United States Geological Survey 1992
Revision by USDA Forest Service 1998

Topography compiled 1954. Planimetry derived from imagery taken 1997
and other sources. Public Land Survey System and survey control current
as of 1998.

North American Datum of 1953 (NAD 27). Projection and 10 000-foot ticks:
Utah coordinate system, north zone (Lambert conformal conic)
Blue 1000-meter Universal Transverse Mercator ticks, zone 12

North American Datum of 1983 (NAD 83) is shown by dashed corner ticks
The values of the datum between NAD 27 and NAD 83 for 7.5-minute
intersections are obtainable from National Geodetic Survey NADCON software

Non-National Forest System lands within the National Forest
holdings may exist in other National or State reservations
This map is not a legal land line or ownership document. Public lands are
subject to change and leasing, and may have access restrictions; check
with local offices. Obtain permission before entering private lands
Landmark buildings verified 2000



SCALE 1:24 000
CONTOUR INTERVAL 40 FEET
SUPPLEMENTARY CONTOUR INTERVAL 10 FEET
NATIONAL GEODETIC VERTICAL DATUM OF 1929
TO CONVERT FROM FEET TO METERS, MULTIPLY BY 0.3048

Interstate	Primary highway
U.S.	Secondary highway
State	Light-duty road
County	Composition: Unspecified...
National Forest, suitable for passenger cars	Paved
National Forest, suitable for high clearance vehicles	Gravel
National Forest Trail	Dirt
	Unimproved; 4 wheel drive
	Trail
	Gate; Barrier

OGDEN, UT 1998
NIMA 3666 III NW-SERIES V897