

EXPLANATION

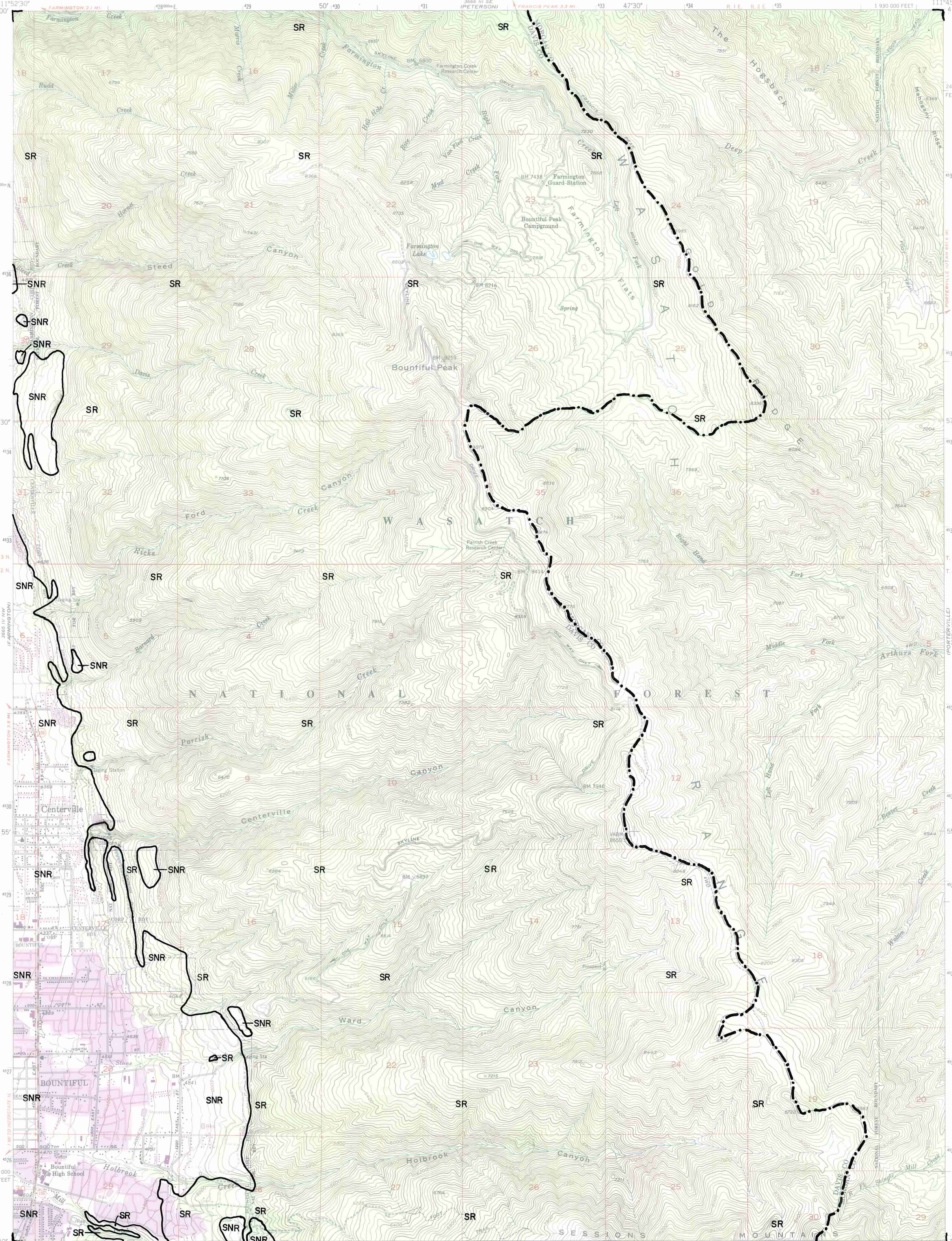
COUNTY LINE

LANDSLIDE HAZARD
BOUNDARY

SNR=area where
landslide-hazard
special studies are
not required.

SR=area where
landslide-hazard
special studies
are recommended.

Landslide-hazard
boundary compiled
from slope and
existing landslides
by Mike Lowe,
Davis County
Geologist, 1989.
For locations of
prehistoric and
historic landslides,
see Slope-failure
Inventory Map -
Bountiful Peak
Quadrangle.



Produced by the United States Geological Survey
in cooperation with State of Utah

Control by USGS and NOS/NOAA

Compiled from aerial photographs taken 1950

Field checked 1952

North American Datum of 1927 (NAD 27). Projection and
10000-foot grid ticks: Utah Coordinate System, north zone
(Lambert Conformal Conic). 1000-meter Universal Transverse
Mercator grid ticks, zone 12, shown in blue

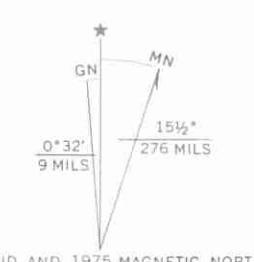
The difference between NAD 27 and North American Datum of
1983 (NAD 83) for 7.5 minute intersections is given in USGS
Bulletin 1875. The NAD 83 is shown by dashed corner ticks

There may be private inholdings within the boundaries of the
National or State reservations shown on this map

Red tint indicates areas in which only landmark buildings are shown

Revisions shown in purple compiled from aerial photographs
taken 1969 and 1975. This information is not field checked

Purple tint indicates extension of urban areas



SCALE 1:24 000



CONTOUR INTERVAL 40 FEET
NATIONAL GEODETIC VERTICAL DATUM OF 1929

THIS MAP COMPLIES WITH NATIONAL MAP ACCURACY STANDARDS
FOR SALE BY U. S. GEOLOGICAL SURVEY, DENVER, COLORADO 80225, OR RESTON, VIRGINIA 22092
A FOLDER DESCRIBING TOPOGRAPHIC MAPS AND SYMBOLS IS AVAILABLE ON REQUEST

ROAD CLASSIFICATION

Medium-duty Light-duty

Unimproved dirt

State Route



BOUNTIFUL PEAK, UTAH
40111-H7-TF-024

1952
PHOTOREVISED 1969 AND 1975
DMA 3665 IV NE-SERIES V897