

SLOPE-FAILURE INVENTORY MAP - KAYSVILLE QUADRANGLE



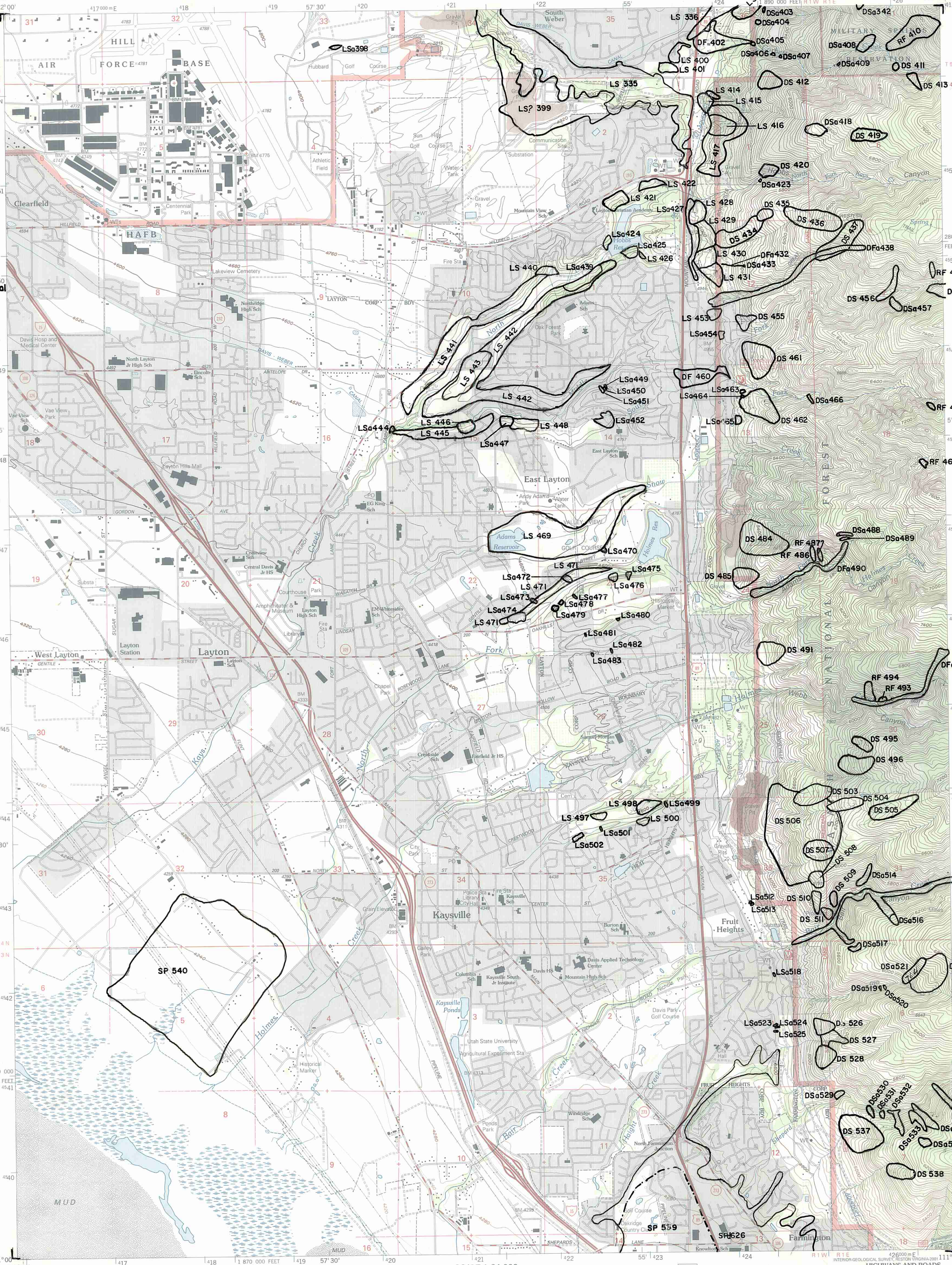
U.S. DEPARTMENT OF THE INTERIOR
U.S. GEOLOGICAL SURVEY



U.S. DEPARTMENT OF AGRICULTURE
FOREST SERVICE

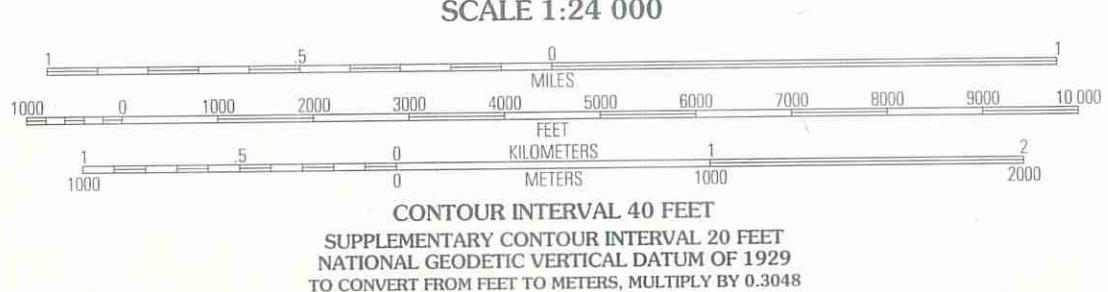
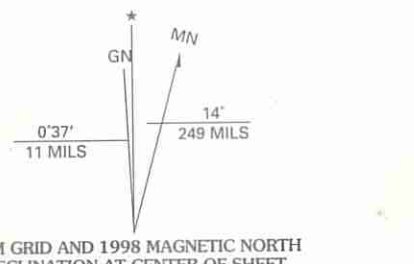
KAYSVILLE QUADRANGLE
UTAH-DAVIS CO.
7.5-MINUTE SERIES (TOPOGRAPHIC)

- EXPLANATION**
- LANDSLIDE BOUNDARY**
- RS = rock slide, rockfall area
- DS = shallow failure, chiefly debris slides grading to debris flows
- DF = debris flows, gradational with debris slides
- LS = deep failure, chiefly slumps and earthflows
- SP = lateral spread
- ? = failure mode uncertain
- a = active (historic)
- b = inactive, young
- c = inactive, mature
- d = inactive, old
- 123 = inventory number for slope failure



Slope failures compiled from original mapping by Anderson and others, 1982; Bryant, 1984; Dames and Moore, 1977; Goode, 1975; Kaliser, 1971, 1976; Kappesser, unpublished; Klauk and Puri, 1978; Lowe, unpublished; Miller, 1980; Nelson and Personius, in preparation; Olson, 1981; Pashley and Wiggins, 1972; Ridd and others, 1980; and Van Horn, 1973, by Mike Lowe, Davis County Geologist, 1989.

Produced by the United States Geological Survey 1992
Revision by USDA Forest Service 1998
Topography compiled 1953. Planimetry derived from imagery taken 1997 and other sources. Public Land Survey System and survey control current as of 1998.
North American Datum of 1927 (NAD 27). Projection and 10 000-foot ticks: Utah coordinate system, north zone (Lambert conformal conic).
Blue 1000-meter Universal Transverse Mercator ticks, zone 12.
North American Datum of 1983 (NAD 83) is shown by dashed corner ticks. The values of this shift between NAD 27 and NAD 83 for 7.5-minute intersections are obtainable from National Geodetic Survey NADCON software.
Non-National Forest System lands within the National Forest. Inholdings may exist in other National or State reservations.
This map is not a legal land line or ownership document. Public lands are subject to change and leasing, and may have access restrictions; check with local offices. Obtain permission before entering private lands.
Landmark buildings verified 2000.



QUADRANGLE LOCATION

1	2	3
4	5	6
7	8	

ADJOINING 7.5' QUADRANGLES

- Interstate 1
- U. S. 2
- State 3
- County 4
- National Forest, suitable for passenger cars 5
- National Forest, suitable for high clearance vehicles 6
- National Forest Trail 7
- Primary highway 8
- Secondary highway 9
- Light-duty road 10
- Composition: Unspecified 11
- Paved 12
- Gravel 13
- Dirt 14
- Unimproved; 4 wheel drive 15
- Trail 16
- Gate; Barrier 17
- KAYSVILLE, UT
1998
NIMA 3666 III SW-SERIES V897

