

POTENTIAL SURFACE-FAULT RUPTURE SENSITIVE AREA OVERLAY ZONE - SALT LAKE CITY NORTH QUADRANGLE



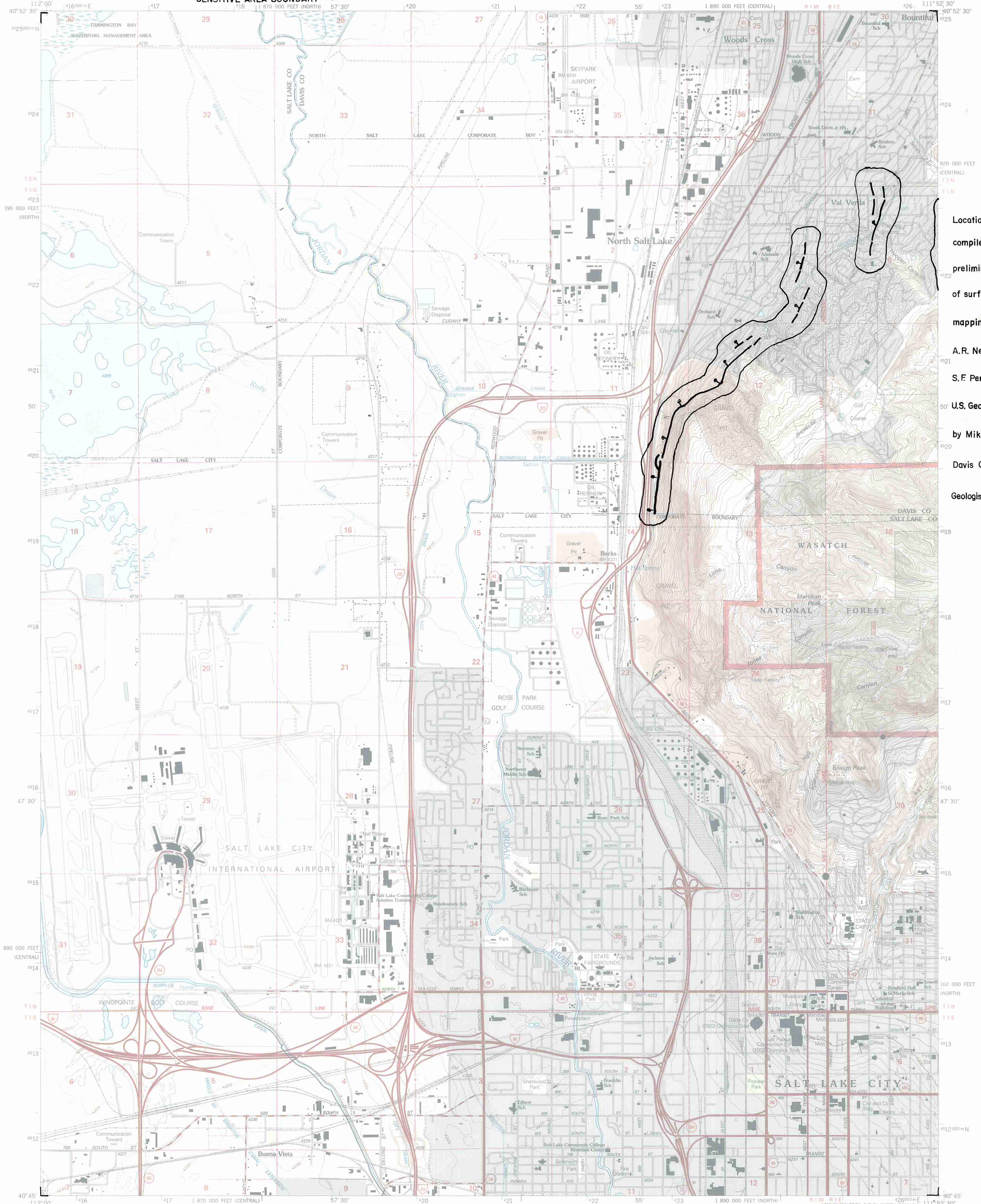
U.S. DEPARTMENT OF THE INTERIOR
U.S. GEOLOGICAL SURVEY

EXPLANATION



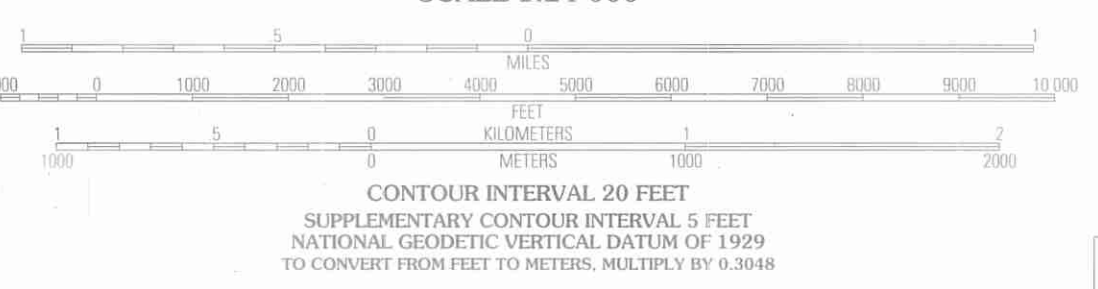
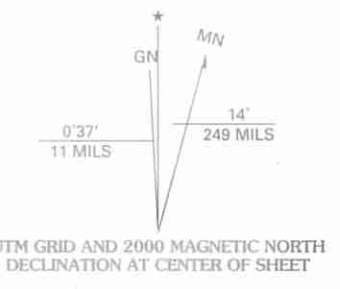
U.S. DEPARTMENT OF AGRICULTURE
FOREST SERVICE

SALT LAKE CITY NORTH QUADRANGLE
UTAH
7.5-MINUTE SERIES (TOPOGRAPHIC)



Location of faults compiled from preliminary drafts of surficial geologic mapping by A.R. Nelson and S.F. Personius, U.S. Geological Survey, Davis County Geologist, 1989.

Produced by the United States Geological Survey 1975
Revision by USDA Forest Service 1998
Topography compiled 1950. Planimetry derived from imagery taken 1997 and other sources. Public Land Survey System and survey control current as of 1998.
North American Datum of 1927 (NAD 27). Projection: Utah coordinate system, central zone (Lambert conformal conic).
10 000-foot ticks: Utah coordinate system central and north zones
Blue 1000-meter Universal Transverse Mercator ticks, zone 12
North American Datum of 1983 (NAD 83) is shown by dashed corner ticks
The values of the shift between NAD 27 and NAD 83 for 7.5-minute intersections are obtainable from National Geodetic Survey NADCON software
Non-National Forest System lands within the National Forest
Inholdings may exist in other National or State reservations
This map is not a legal land line or ownership document. Public lands are subject to change and leasing, and may have access restrictions; check with local offices. Obtain permission before entering private lands
Landmark buildings verified 2000



HIGHWAYS AND ROADS	
Interstate	
U.S. ...	
State ...	
County ...	
National Forest, suitable for passenger cars	
National Forest, suitable for high clearance vehicles	
National Forest Trail	
Primary highway	
Secondary highway	
Light-duty road	
Composition: Unspecified	
Paved	
Gravel	
Dirt	
Unimproved; 4 wheel drive	
Trail	
Gate; Barrier	

ADJOINING 7.5 QUADRANGLES	
1	1 Saltair NE
2	2 Farmington
3	3 Bountiful Peak
4	4 Saltair
5	5 Fort Douglas
6	6 Magna
7	7 Salt Lake City South
8	8 Sugar House

THIS MAP COMPLIES WITH NATIONAL MAP ACCURACY STANDARDS
FOR SALE BY U.S. GEOLOGICAL SURVEY, P.O. BOX 25286, DENVER, COLORADO 80225
A FOLDER DESCRIBING TOPOGRAPHIC MAPS AND SYMBOLS IS AVAILABLE ON REQUEST



ISBN 0-607-97249-1
9 780607 972498

SALT LAKE CITY NORTH, UT
1998
NIMA 3665 IV SW-SERIES V897