

# DAVIS COUNTY

# INFLUENZA REPORT

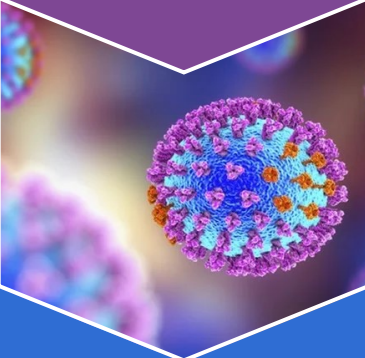
2020-21 Influenza Season Midseason Report, April 2021

## LOCAL SUMMARY

ILI activity level:  
**LOW**

Season-to-date hospitalizations:  
**3**

Weekly ILI rate:  
**0.4%**



Influenza-like Illness (ILI) is defined as fever (temperature of  $\geq 100^{\circ}\text{F}$  [ $37.8^{\circ}\text{C}$ ]), cough, and/or a sore throat without a known cause other than influenza.

## INFLUENZA ACTIVITY IN DAVIS COUNTY

Influenza activity in Davis County and Utah has been at a low level throughout the 2020-21 influenza season. Due to the COVID-19 pandemic, school absenteeism is not a reliable metric for influenza numbers this season. There have been three total influenza-related hospitalizations in Davis County (see Figure 1) and 14 in Utah since the start of the 2020-21 influenza season. These trends have been documented nationwide (see Figure 2) and data is limited due to the widespread impact of COVID-19.

Figure 1. Influenza-like-Illness rate and Hospitalized Influenza Cases, by subtype and admission date, Davis County, 2020-21

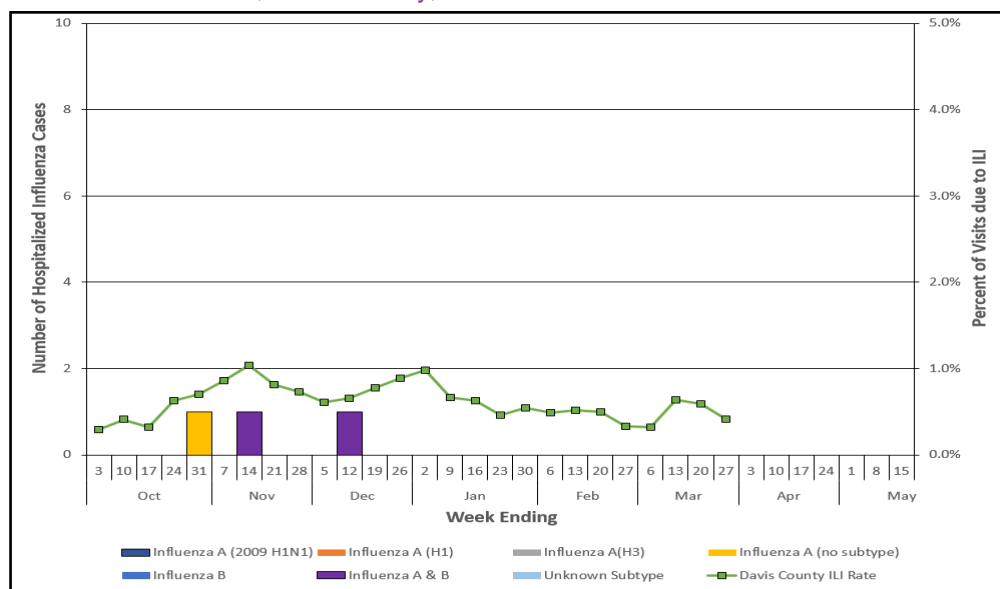


Figure 2. Weekly Influenza-Like Illness Activity Level, Week 11 (March 14 - 20, 2021)

