

# Davis County Area Deprivation Index (ADI)

Davis County Health Department  
Isa Perry

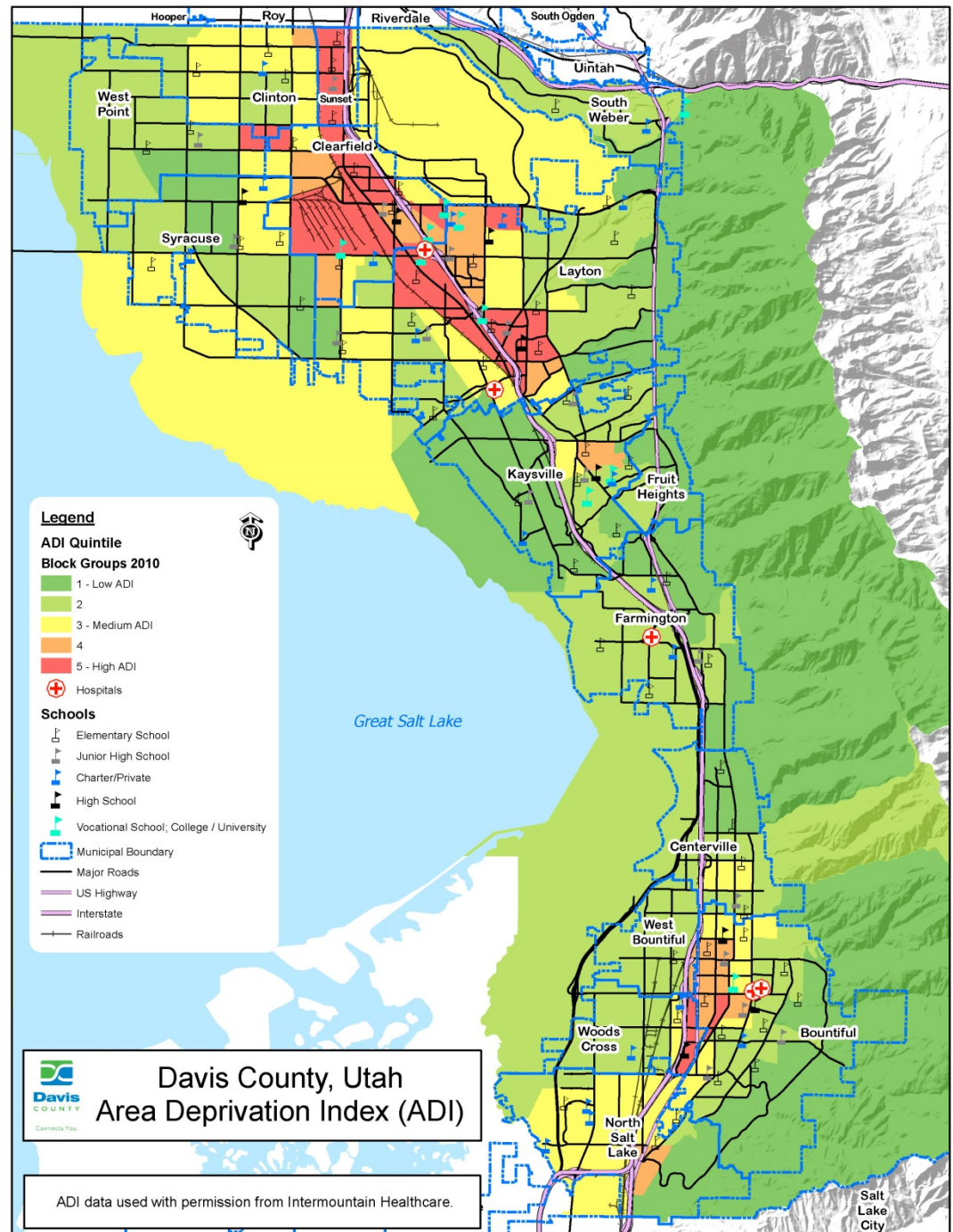


**Davis**  
COUNTY

# What is ADI?

- ▶ ADI data from Intermountain Healthcare & University of Utah
- ▶ Geographic area-based measure of the socio-economic deprivation experiences by a neighborhood
- ▶ Index developed and validated by Singh (2003) based upon 17 census measures
  - Education
  - Employment
  - Income
  - Living Conditions
- ▶ Developed at the census block group level for the state of Utah
- ▶ Surrogate measure for impact of deprivation, social determinants, vulnerability
- ▶ Davis County Health Department requested county ADI data to use in local community health assessment efforts

# Davis County ADI Map



# Davis County Disparity Profiling

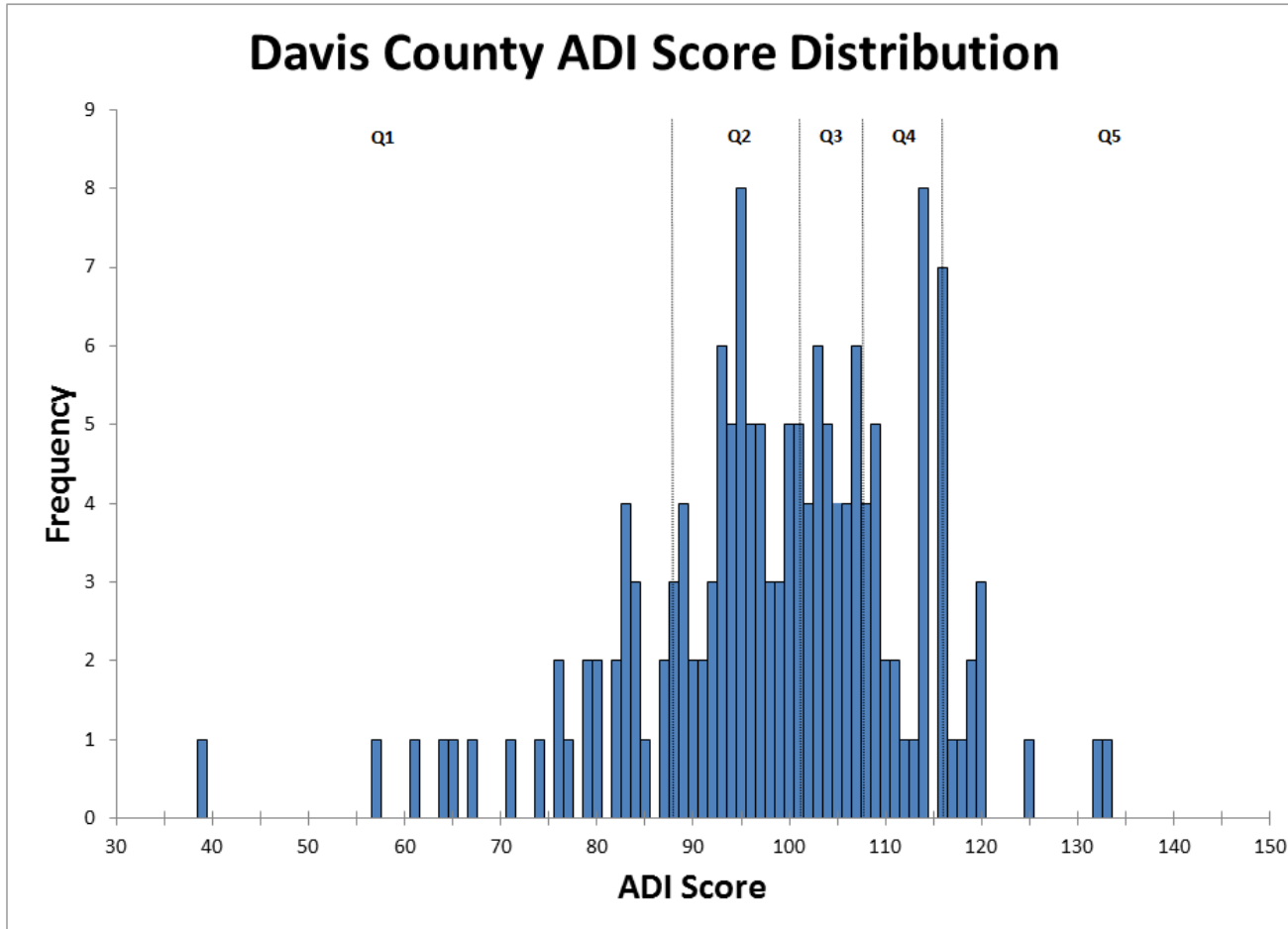
Category	Census Indicators	Census mean values, by ADI quintile				
		Q1-Least	Q2	Q3	Q4	Q5-Most
Income/ Poverty	Median family income	\$ 106,756	\$ 83,922	\$ 67,522	\$ 54,399	\$ 44,332
	Income disparity (ratio of low income (<\$15,000) to high income (>\$75,000))	0.30	0.42	0.55	1.01	1.11
	Families below poverty level, %	3.8%	4.8%	5.4%	10.0%	13.8%
	% population below 150% poverty threshold	7.1%	11.2%	15.7%	20.8%	31.5%
	Single parent households with dependents <18, %	4.7%	6.9%	10.3%	12.8%	16.4%
	Households without a motor vehicle, %	1.0%	1.8%	3.4%	5.9%	8.0%
	Households without a telephone, %	1.0%	1.6%	1.9%	2.3%	2.9%
	Occupied housing units without complete plumbing%	0.2%	0.5%	0.1%	0.2%	0.4%
Housing	Owner occupied housing units, %	91.9%	85.4%	70.5%	65.0%	55.7%
	Households with >1 person per rm, %	0.5%	1.9%	2.1%	3.6%	3.2%
	Median monthly mortgage, \$	\$ 1,998	\$ 1,581	\$ 1,284	\$ 1,197	\$ 966
	Median gross rent, \$	\$ 560	\$ 758	\$ 786	\$ 740	\$ 729
	Median home value, \$	\$ 328,527	\$ 236,171	\$ 192,106	\$ 158,353	\$ 116,812
Employment	Employed persons 16+ in white collar occupation, %	51.0%	43.1%	37.2%	29.7%	23.4%
	Civilian labor force unemployed (aged 16+), %	5.0%	4.6%	5.0%	6.4%	7.2%
Education	Population aged 25+ with <9 yr education, %	0.6%	0.5%	1.2%	1.3%	4.0%
	Population aged 25+ with at least high school education, %	97.7%	97.0%	95.1%	92.9%	87.6%

2010 census data used to create Area Deprivation Index (ADI) and calculate quintile averages.

# Key Differences Between Q1 and Q5

- ▶ Median family income
  - Q1: \$106,756 vs Q5: \$44,332
- ▶ % population below 150% poverty threshold:
  - Q1: 3.8% vs Q5: 31.5%
- ▶ Owner occupied housing units
  - Q1: 91.9% vs Q5: 55.7%
- ▶ Employment in white collar occupation
  - Q1; 51.0% vs 23.4%

# ADI Distribution



# Areas With High ADI (Q5)

- Bountiful
  - 1 Census Block Group
  - 810 residents in Q5
- Clearfield
  - 7 Census Block Groups
  - 9,946 residents in Q5 (apprx 30% of total population)
- Layton
  - 10 Census Block Groups
  - 14,155 residents in Q5 (apprx 20% of total population)
- Sunset
  - 4 Census Block Groups
  - 5,108 residents in Q5 (100% of total population)
- Woods Cross
  - 1 Census Block Group
  - 810 residents in Q5



# Acknowledgements & References

- ▶ HCIA Round 1 award from the Center for Medicare and Medicaid Innovation 1C1CMS330978, LA Savitz, Project Director, 7/2/12–12/31/15.
  - Andrew J Knighton PhD CPA
  - Lucy Savitz PhD MBA
  - Tom Belnap MS
  - Brad Stephenson
  - Jim Vanderslice PhD
- ▶ Davis County Presentation
  - Isa Perry, Community Outreach Planner, Davis County Health Department, 801–525–5212 or [isa@daviscountyutah.gov](mailto:isa@daviscountyutah.gov)
  - Eun Hea Unsicker, U of U MPH Practicum Student, Davis County Health Department