

Respiratory Illness Report - Week ending April 6, 2024

Published April 12, 2024

Overview

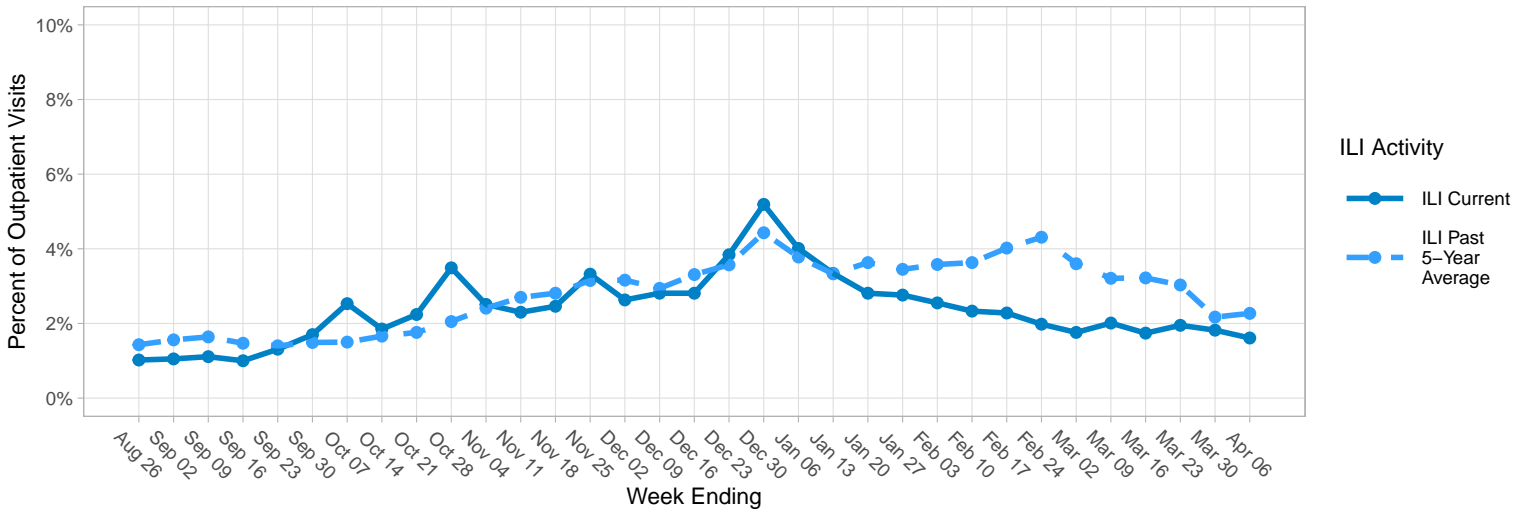
Influenza: Statewide influenza-like illness (ILI) and hospitalization rates in Utah remain in low severity. In Davis County, current ILI rates remained in minimal severity.

COVID-19 Wastewater Surveillance: As of April 4, overall statewide viral concentrations in wastewater are low. There are two sites (5.7%) in the Elevated category, 8 sites (22.9%) in the Watch category, and 25 sites (71.4%) in the Low category. In Davis County, the North Davis site (Layton, Clearfield, Syracuse, West Point area) and South Davis – North site (Woods Cross, Bountiful, West Bountiful, Centerville area) are both in the Watch category. The remaining two sites are both in the Low category. Explore statewide wastewater surveillance data at <https://avrpublish.dhhs.utah.gov/uwss/>.

Influenza-Like Illness

Graph 1 displays the weekly percentage of outpatient visits due to influenza-like illness (ILI). For comparison, the dashed line shows the previous 5-year average (2018-2022) of ILI activity. This week's ILI rate was 1.6%.

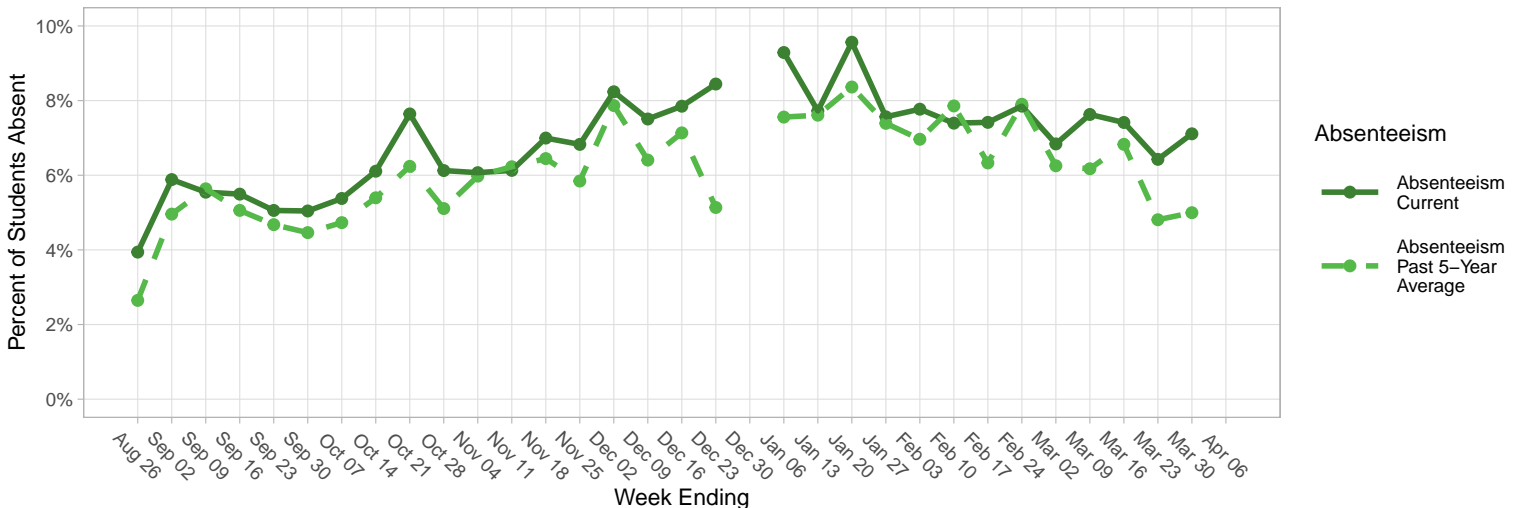
Graph 1. Percent of Outpatient Visits due to Influenza-Like Illness, by Week, Davis County, Utah



School Absenteeism

Graph 2 displays the weekly percentage of elementary school absenteeism in Davis School District. For comparison, the dashed line shows the absenteeism rate of the previous 5 school years (school years beginning 2018-2022). This week's absenteeism rate was NA%.

Graph 2. Percentage of Elementary School Absenteeism, by Week, Davis School District, Utah



Emergency Department Visits

Graph 3 displays the rolling 7 day average of the percent of emergency department (ED) visits due to COVID-19, influenza, and respiratory syncytial virus (RSV). These data are obtained from syndromic surveillance and only consider the diagnosis discharge codes for each condition. Table 1 presents two data points for each virus: the current trend of ED visits (increasing, decreasing, or no change), and the percent of ED visits due to each during the currently reported week.

Graph 3. Percent of ED Visits due to COVID-19, Influenza, & RSV, Rolling 7-day Average, Davis County, Utah

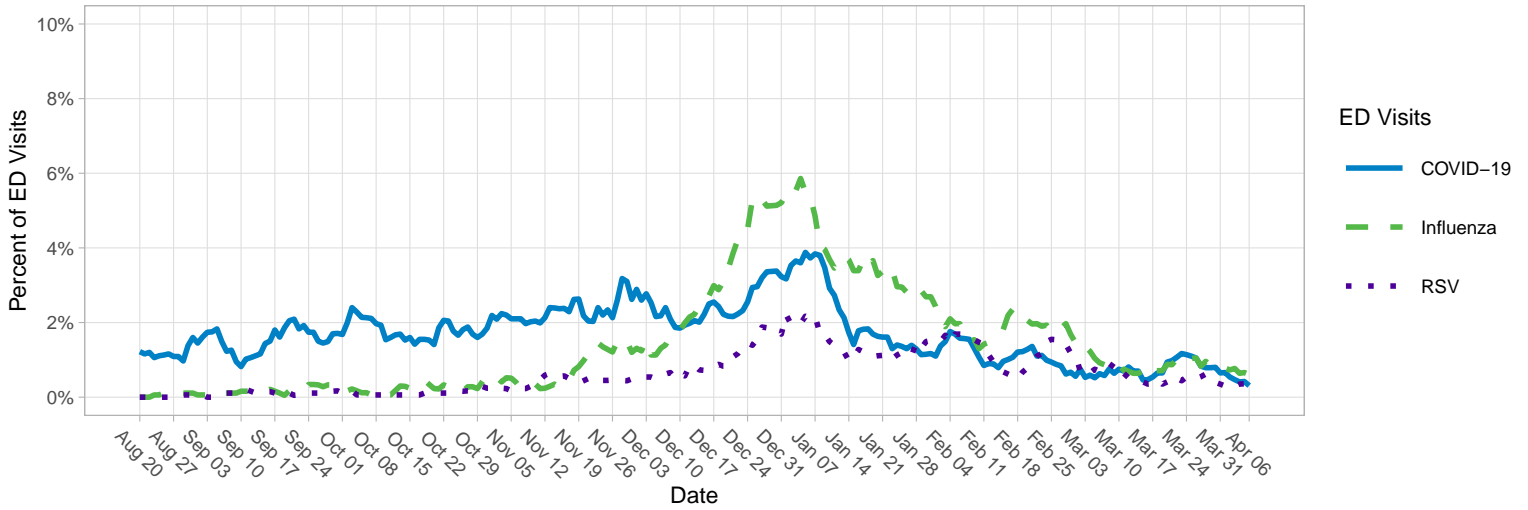


Table 1: Recent Trends of ED Visits, Davis County, Utah, for Week Ending Apr 06, 2024

Virus	Trend	Percent of ED Visits
COVID-19	Decreasing (last 14 days)	0.3 %
Influenza	Decreasing (last 14 days)	0.6 %
RSV	Decreasing (last 14 days)	0.4 %

Hospitalizations

Graph 4 displays the weekly number of hospitalizations due to COVID-19 and influenza.

Graph 4. Number of Hospitalizations due to COVID-19 & Influenza, Davis County, Utah

