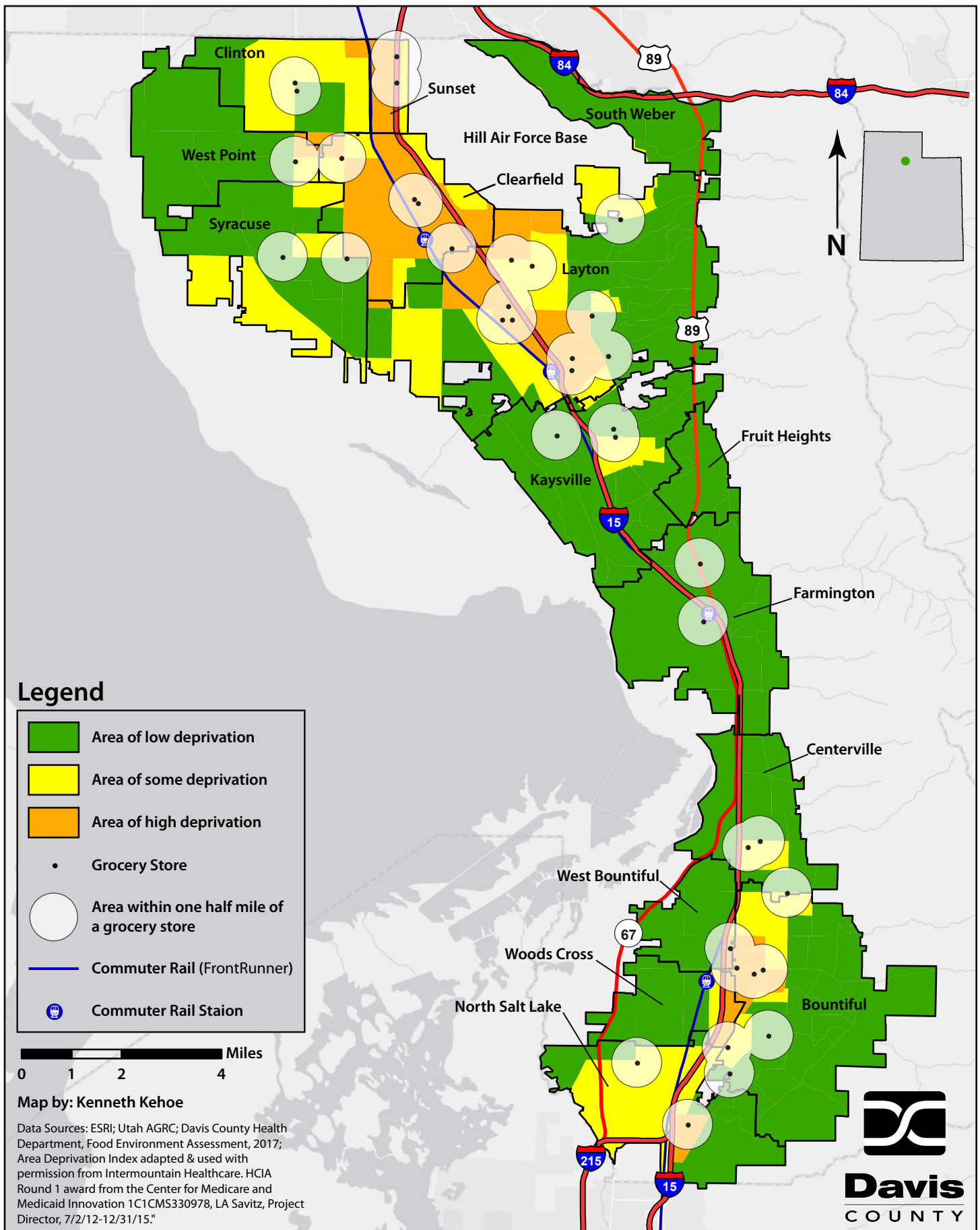


# 2017 Grocery Store Access, Davis County, Utah



## **Davis County Area Deprivation Index**

Income, education, and other economic and social risk factors affect individual health and well-being. The Area Deprivation Index (ADI) is a community socio-economic composite measure used by Intermountain Healthcare at the U.S. Census block group level to measure the distribution of socio-economic disadvantage within the community. The index is based upon 17 census measures for education, employment, income, and living conditions. ADI serves as a surrogate measure for impact of deprivation and social determinants of health. Higher socio-economic deprivation levels in communities (noted in orange on the map) have been associated with poorer health and health outcomes.

Davis County Health Department requested the ADI data from Intermountain so that we could develop local maps. The ADI has many public health applications and can be used to help target community health improvement efforts. Contact Isa Perry @ 801-525-5212 or [isa@daviscountyutah.gov](mailto:isa@daviscountyutah.gov) for more details.



Davis County Health Department  
22 South State Street  
Clearfield, Utah 84015

Healthy Choices.  
Healthy People.  
Healthy Communities.